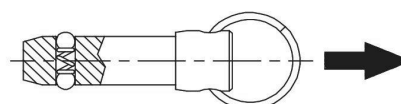


DETENT PINS

SHANK & HEAD: 300-SERIES STAINLESS STEEL, PASSIVATED; SPRING & RING: 302 STAINLESS STEEL; BALLS: 440C STAINLESS STEEL

1



Solid alignment pin with spring-loaded locking balls (not positive locking like a Ball Lock Pin). Simply push pin to insert, and pull to remove. Available in stainless steel. Standard shank diameters from 3/16 to 1" (6 to 20mm in metric). Note: 3/16-diameter pins have one ball, instead of two, due to their small size. Any grip length up to 6" (150mm in metric) is available as a standard, at no extra charge. Available from stock in many standard grip lengths, or quickly made to order in custom lengths and diameters.

Optional Cable

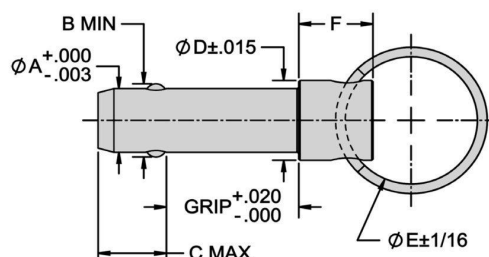
The optional attached Cable Assembly (-C) is 12" long (part no. CL-82-KA-12.0 if ordered separately), while the optional attached Nylon Lanyard (-NL) is 10" long (part no. CL-1-NL-10 if ordered separately). Both have an eyelet at the free end for a #10 or M5 attachment screw.

Ordering Example (INCH):

CL - 4 - DEP - 1.50 - S - C
Diameter (16ths of an inch) Grip length (inches)
Add -C for attached Cable Assembly or
- NL for attached Nylon Lanyard

Ordering Example (Metric):

CLM - 6 - DEP - 50 - S - C
Add M for metric Diameter (mm) Grip length (mm)
Add -C for attached Cable Assembly or
- NL for attached Nylon Lanyard



INCH

INCH		A DIA		B	C	D DIA	E DIA	F	STOCK GRIP LENGTH (INCHES)										
PART NO.	NOMINAL	ACTUAL	0.50						0.75	1.00	1.25	1.50	1.75	2.00	2.25	2.50	3.00	3.50	4.00
CL-3-DEP-xxx-S	3/16(#10)	.1880	.217	.250		.375				•	•	•	•	•	•	•	•	•	•
CL-4-DEP-xxx-S	1/4	.2480	.280	.344						•	•	•	•	•	•	•	•	•	•
CL-5-DEP-xxx-S	5/16	.3105	.360	.359	.438						•	•	•	•	•	•	•	•	•
CL-6-DEP-xxx-S	3/8	.3730	.430	.390	.500						•	•	•	•	•	•	•	•	•
CL-8-DEP-xxx-S	1/2	.4980	.570	.516	.625						•	•	•	•	•	•	•	•	•
CL-10-DEP-xxx-S	5/8	.6230	.720	.672	.750						•	•	•	•	•	•	•	•	•
CL-12-DEP-xxx-S	3/4	.7480	.860	.750	.875						•	•	•	•	•	•	•	•	•
CL-16-DEP-xxx-S	1	.9980	1.160	.984	1.125						•	•	•	•	•	•	•	•	•

METRIC

PART NO.	A DIA		B	C	D DIA	E DIA	F	STOCK GRIP LENGTH (mm)					
	NOMINAL	ACTUAL						15	20	25	30	40	50
CLM-6-DEP-xx-S	6mm	.2342	.266	.344	.375			•	•			•	•
CLM-8-DEP-xx-S	8mm	.3130	.363	.359	.438						•	•	•
CLM-10-DEP-xx-S	10mm	.3917	.451	.390	.500	1.00							
CLM-12-DEP-xx-S	12mm	.4704	.540	.516	.563								•

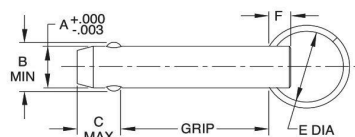
MARINE DETENT PINS

SHANK: 316 STAINLESS STEEL
RING: 316 OR 300-SERIES STAINLESS STEEL
SPRING & BALLS: 316 STAINLESS STEEL

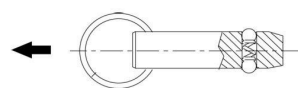


Ordering Example (INCH):

CL - 4 - MDP - 1.50 - S - C
Diameter (16ths of an inch) ———
Grip length (inches) ———
Add -C for attached Cable Assembly
or -NL for attached Nylon Lanyard



Marine Detent Pins are made of 316 stainless steel for extra corrosion resistance. Economical quick-release alignment pin with a solid shank and spring-loaded locking balls. This type of Detent Pin has a ring instead of a solid shoulder, for applications where exact grip length is not important. Locking balls hold the pin in place by spring force (not positive locking like a Ball Lock Pin). Simply push the pin to insert, and pull to remove. Available in standard pin diameters from 3/16 to 1/2", in stainless steel only. Note: 3/16" pins have only one locking ball instead of two due to their small size. Available from stock in many standard grip lengths, with other grip lengths available as specials. Optionally available with an attached Cable Assembly (-C) or an attached Nylon Lanyard (-NL).



DIMENSIONS (INCH)

PART NO.	A DIA		B	C	E DIA	F DIA
	NOMINAL	ACTUAL				
CL-3-MDP-x.xx-S	3/16 (#10)	.1880	.200	.345	1.00	.25
CL-4-MDP-x.xx-S	1/4	.2480	.280	.344		
CL-5-MDP-x.xx-S	5/16	.3105	.360	.359		
CL-6-MDP-x.xx-S	3/8	.3730	.430	.390		
CL-8-MDP-x.xx-S	1/2	.4980	.570	.516		

STANDARD STOCK GRIP LENGTHS (INCH)

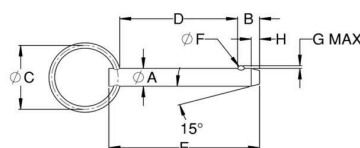
PART NO.	NOMINAL SHANK DIA	GRIP LENGTH (INCHES)											
		0.50	0.75	1.00	1.25	1.50	1.75	2.00	2.25	2.50	3.00	3.50	4.00
CL-3-MDP-x.xx-S	3/16 (#10)	X	X	X	X	X	X	X	X	X	X	X	X
CL-4-MDP-x.xx-S	1/4	X	X	X	X	X	X	X	X	X	X	X	X
CL-5-MDP-x.xx-S	5/16		X	X	X	X	X	X	X	X	X	X	X
CL-6-MDP-x.xx-S	3/8		X	X	X	X	X	X	X	X	X	X	X
CL-8-MDP-x.xx-S	1/2			X	X	X	X	X	X	X	X	X	X

ECONOMY DETENT PINS

SHANK: MILD STEEL, ZINC PLATED CLEAR CHROMATE
RING: STEEL SPRING WIRE, ZINC PLATED CLEAR CHROMATE
SPRING & BALLS: STEEL



Economical quick-release alignment pin with a solid steel shank and one spring-loaded locking ball. This type of Detent Pin has a ring instead of a solid shoulder, for applications where exact grip length is not important. Locking ball holds the pin in place by spring force (not positive locking like a Ball Lock Pin). Simply push the pin to insert, and pull to remove. Available in standard pin diameters 3/16", 1/4", 5/16", and 1/2", in the standard grip lengths listed below. Optionally available with an attached Cable Assembly (-C) or an attached Nylon Lanyard (-NL). For other diameters and grip lengths, see above for Marine Detent Pins (the stainless steel version of this pin).



INCH

PART NO.	A DIA		B	C DIA	D GRIP LENGTH	E	F DIA	G	H
	NOMINAL	ACTUAL							
CL-3-EDP-1.00	3/16	.1855 / .1880	.23	7/8	1.00	1.37	3/32	.028	.08
CL-4-EDP-1.25	1/4	.2480 / .2505	.28	1	1.25	1.67	1/8	.038	.09
CL-4-EDP-1.50					1.50	1.92			
CL-5-EDP-1.00	5/16	.3105 / .3130	.34	1	1.00	1.53	5/32	.047	.13
CL-8-EDP-1.50	1/2	.4980 / .5005	.52	1-1/4	1.50	2.25	1/4	.075	.17
CL-8-EDP-2.00					2.00	2.75			

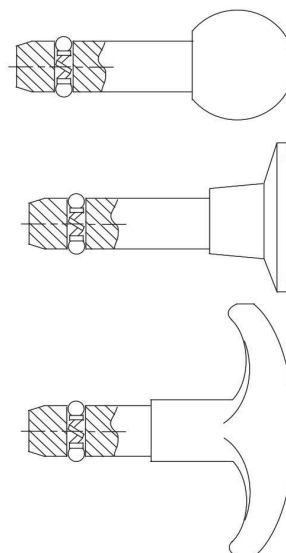
THREADED DETENT PINS

SHANK: 300-SERIES STAINLESS STEEL
SPRING: 17-7PH OR 302 STAINLESS STEEL
BALLS: 440C STAINLESS STEEL

1



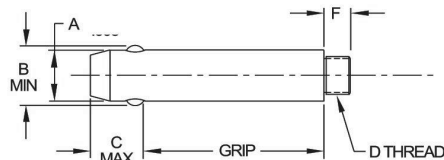
Threaded Detent Pins are solid alignment pins with a ground shank and a threaded end for a knob handle. Two locking balls hold the pin in place by spring force. Simply push to insert, and pull to remove. The threaded end accepts virtually any type of knob handle (order separately — available in steel, stainless steel, and several different plastics). Knob handles can be permanently secured with thread-locking adhesive if desired. Threaded Detent Pins are available in stainless steel only. Standard shank diameters from 3/16 to 1/2" (6 to 10mm in metric), each in a choice of many standard grip lengths. Note: 3/16-diameter pins have only one locking ball instead of two due to their small size. Available from stock only in the standard grip lengths listed (other grip lengths available as specials).



INFO+: For a wide selection of knob handles to fit these Threaded Detent Pins, see pages 140-146.

INCH

PART NO.	A DIA		GRIP LENGTH	B	C	D	F
	NOMINAL	ACTUAL +.000/-0.003					
CL-3-TDP-0.50-S	3/16(#10)	.1880	.50	.200	.250	#8-32	1/4
CL-3-TDP-0.75-S			.75				
CL-3-TDP-1.00-S			1.00				
CL-3-TDP-1.25-S			1.25				
CL-3-TDP-1.50-S			1.50				
CL-3-TDP-1.75-S			1.75				
CL-3-TDP-2.00-S			2.00				
CL-4-TDP-0.50-S	1/4	.2480	.50	.280	.344	#10-32	1/4
CL-4-TDP-0.75-S			.75				
CL-4-TDP-1.00-S			1.00				
CL-4-TDP-1.25-S			1.25				
CL-4-TDP-1.50-S			1.50				
CL-4-TDP-1.75-S			1.75				
CL-4-TDP-2.00-S			2.00				
CL-4-TDP-2.50-S	5/16	.3105	2.50	.360	.359	1/4-20	3/8
CL-4-TDP-3.00-S			3.00				
CL-5-TDP-0.75-S			.75				
CL-5-TDP-1.00-S			1.00				
CL-5-TDP-1.25-S			1.25				
CL-5-TDP-1.50-S			1.50				
CL-5-TDP-1.75-S			1.75				
CL-5-TDP-2.00-S	3/8	.3730	2.00	.430	.390	1/4-20	3/8
CL-5-TDP-2.50-S			2.50				
CL-5-TDP-3.00-S			3.00				
CL-6-TDP-0.75-S			.75				
CL-6-TDP-1.00-S			1.00				
CL-6-TDP-1.25-S			1.25				
CL-6-TDP-1.50-S			1.50				
CL-6-TDP-1.75-S	1/2	.4980	1.75	.570	.516	3/8-16	1/2
CL-6-TDP-2.00-S			2.00				
CL-6-TDP-2.50-S			2.50				
CL-6-TDP-3.00-S			3.00				
CL-6-TDP-3.50-S			3.50				
CL-8-TDP-1.00-S			4.00				
CL-8-TDP-1.50-S			1.00				
CL-8-TDP-2.00-S	1/2	.4980	1.50	.570	.516	3/8-16	1/2
CL-8-TDP-2.50-S			2.00				
CL-8-TDP-3.00-S			2.50				
CL-8-TDP-3.50-S			3.00				
CL-8-TDP-4.00-S			3.50				
CL-8-TDP-4.50-S			4.00				
CL-8-TDP-5.00-S			4.50				



METRIC

PART NO.	A DIA (mm)		GRIP LENGTH (mm)	B (mm)	C (mm)	D THREAD	F (mm)
	NOMINAL	ACTUAL +.000/-0.076					
CLM-6-TDP-15-S	6	5.95	15	6.75	8.74	M5	6
CLM-6-TDP-20-S	6	5.95	20	6.75	8.74	M5	6
CLM-6-TDP-25-S	6	5.95	25	6.75	8.74	M5	6
CLM-6-TDP-30-S	6	5.95	30	6.75	8.74	M5	6
CLM-6-TDP-40-S	6	5.95	40	6.75	8.74	M5	6
CLM-6-TDP-50-S	6	5.95	50	6.75	8.74	M5	6
CLM-8-TDP-20-S	8	7.95	20	9.22	9.11	M6	10
CLM-8-TDP-25-S	8	7.95	25	9.22	9.11	M6	10
CLM-8-TDP-30-S	8	7.95	30	9.22	9.11	M6	10
CLM-8-TDP-40-S	8	7.95	40	9.22	9.11	M6	10
CLM-8-TDP-50-S	8	7.95	50	9.22	9.11	M6	10
CLM-10-TDP-20-S	10	9.95	20	11.45	9.90	M8	10
CLM-10-TDP-25-S	10	9.95	25	11.45	9.90	M8	10
CLM-10-TDP-30-S	10	9.95	30	11.45	9.90	M8	10
CLM-10-TDP-40-S	10	9.95	40	11.45	9.90	M8	10
CLM-10-TDP-50-S	10	9.95	50	11.45	9.90	M8	10